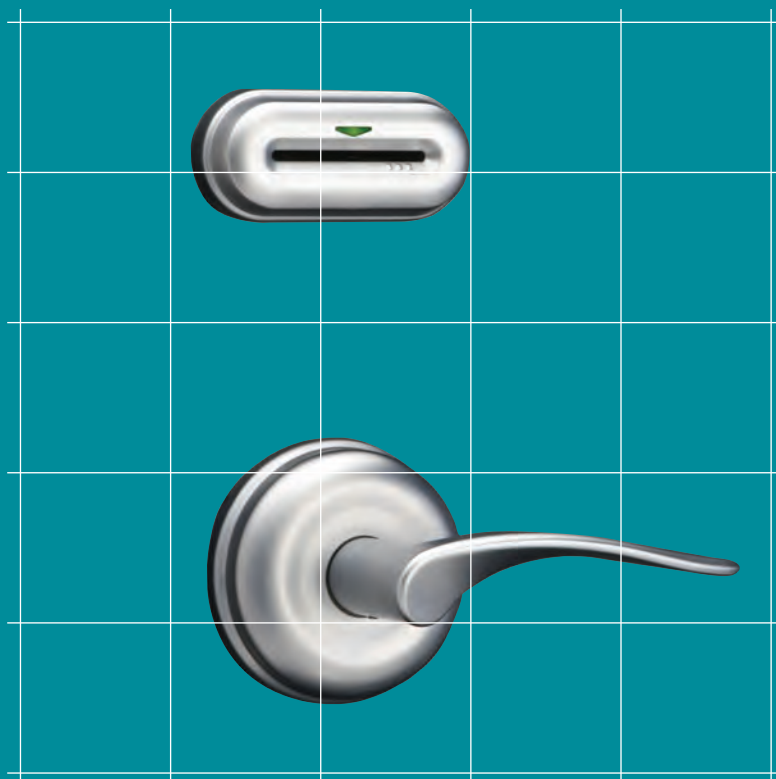


ADVANCE ▶▶

by Onity

Advancing security design and technology



Onity

A UTC Fire & Security Company

Real Solutions  Reliable Support

A History of Innovation

For over 20 years, Onity (formerly TESA Entry Systems) has been recognized as a world leading provider of electronic locks for the hospitality industry. With more than 3 million locks installed around the globe, Onity products can be found in over 20,000 properties and more than 200 hotel chains.

As technology has advanced over the past few decades, Onity has evolved into much more than just a lock manufacturer. Today, Onity provides a host of facility management technologies - from electronic locking systems to guestroom safes and complete energy management solutions.

In order to fulfill our staunch commitment to superior global service with local support, Onity maintains an extensive sales and service network that spans more than 115 countries and provides 365/24/7 support on all products.



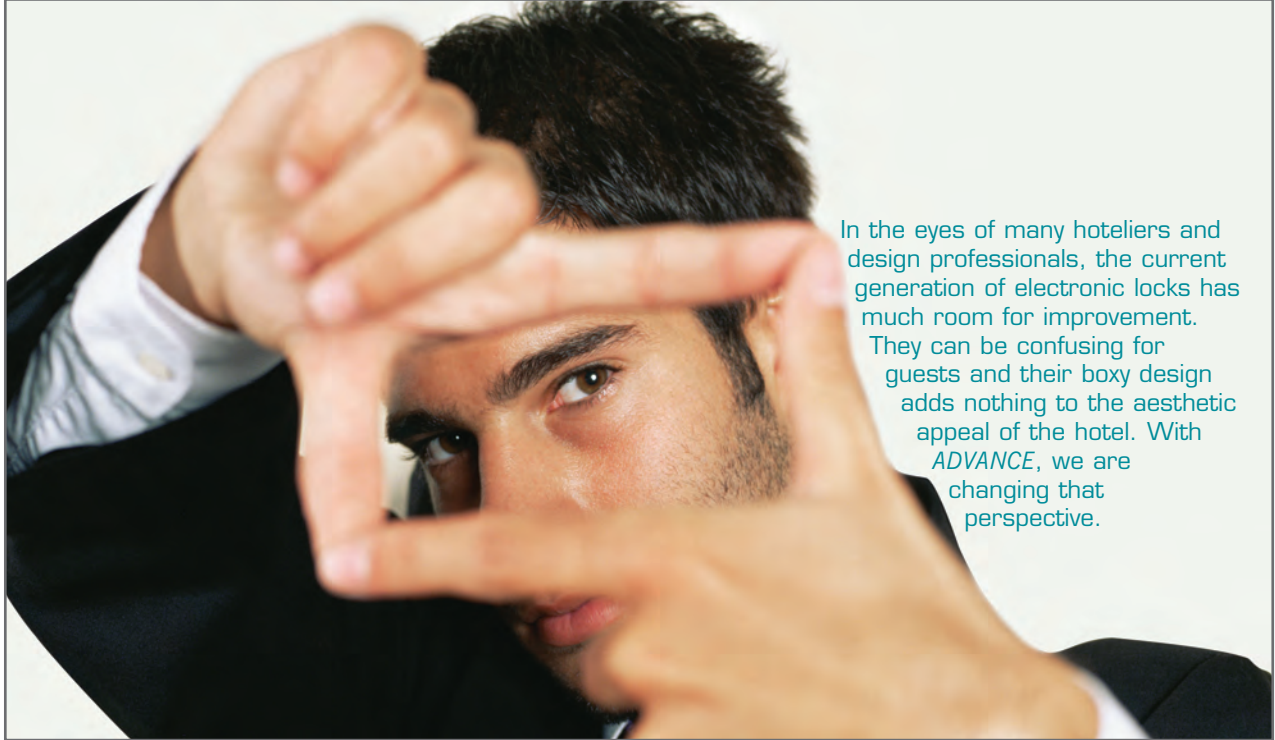
Introducing **ADVANCE** by Onity™

ADVANCE by Onity™ is a revolutionary new locking solution that is destined to change the way you look at hotel security design and technology.

ADVANCE combines the reliability of the world's most trusted name in electronic locking with a fresh new aesthetic look that is designed to meet the needs of the demanding hospitality environment.

ADVANCE features a unique two-piece modular design and an array of attractive options that allow you to seamlessly blend your guest room door locks into any hotel décor. One look at ADVANCE and you'll never look at door locks the same way again.

Changing the way you look at hotel security design.



In the eyes of many hoteliers and design professionals, the current generation of electronic locks has much room for improvement. They can be confusing for guests and their boxy design adds nothing to the aesthetic appeal of the hotel. With *ADVANCE*, we are changing that perspective.

Research

Thinking outside the box

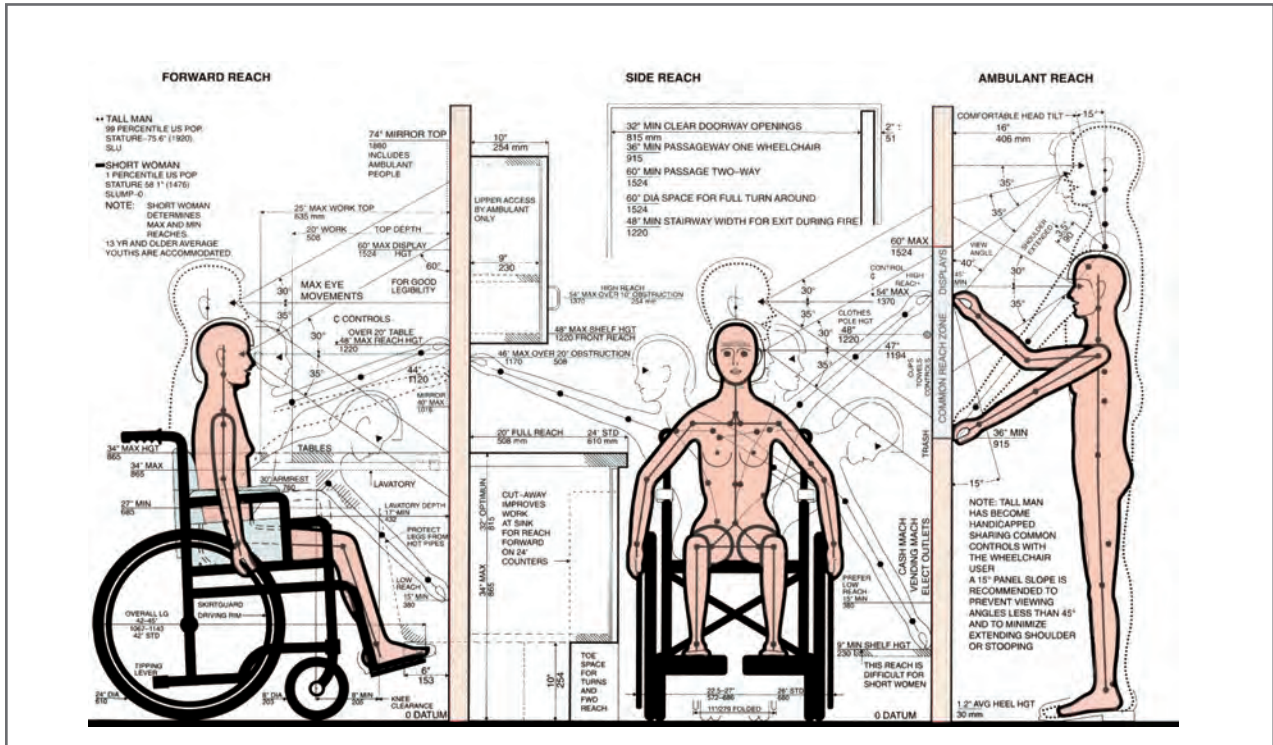
Onity was the first lock manufacturer to introduce an electronic locking system based on magstripe technology. In that same innovative spirit, we set out to develop the world's most advanced lock for a new generation of hotels.

Developed through several years of careful R&D that included detailed scientific data, as well as feedback from a broad spectrum of hoteliers, guests and design professionals, *ADVANCE* by Onity™ builds upon the proven reliability and convenience of the current generation of electronic locks. However, it is designed to satisfy the needs of today's hotels and their guests in entirely new ways. Making a radical leap from the rectangular look of most current hotel door locks, *ADVANCE* by Onity™ is much more than just an updated design. It is an entirely new concept in electronic locking that meets both the aesthetic and technological needs of the global hotel market.



Improving aesthetics and ease of use without compromising security.

Human factors & ergonomics

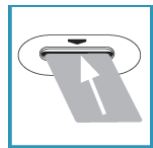


During the development of *ADVANCE*, the Onity team began with a thorough assessment of the human factors in electronic locking - more commonly described as ergonomics. Ergonomics is not only a “look”, on the contrary, it is a physical and psychological interaction between user and product; intuitiveness of use; and overall comfort of the person using the product.

With that in mind, today Onity is proud to deliver the best of all worlds creating a whole new standard for electronic locking systems industry-wide: a lock that combines a pleasing new aesthetic and ergonomic design, with upgradeable, dual technology and advanced operational features.

Usability Preferences for Card Reader Configurations

Given the numerous ways of inserting a keycard in electronic locks today, Onity took special care in selecting the most user-friendly and intuitive method, in order to maximize user-friendliness. Our study results showed two clearly preferred insertion ways: Card down and Horizontal. Any of the two could have been chosen, but the Horizontal insertion presents an additional advantage: It allows a more minimalist design, which is what today’s design professionals are asking for.



The Groove & Arrow concept makes the keycard insertion naturally intuitive

With *ADVANCE*, Onity took a step beyond, researching various reader alternatives that would increase the rate of correct first time keycard insertion. As a result, we developed the “Groove & Arrow” concept, which makes the keycard insertion naturally intuitive.

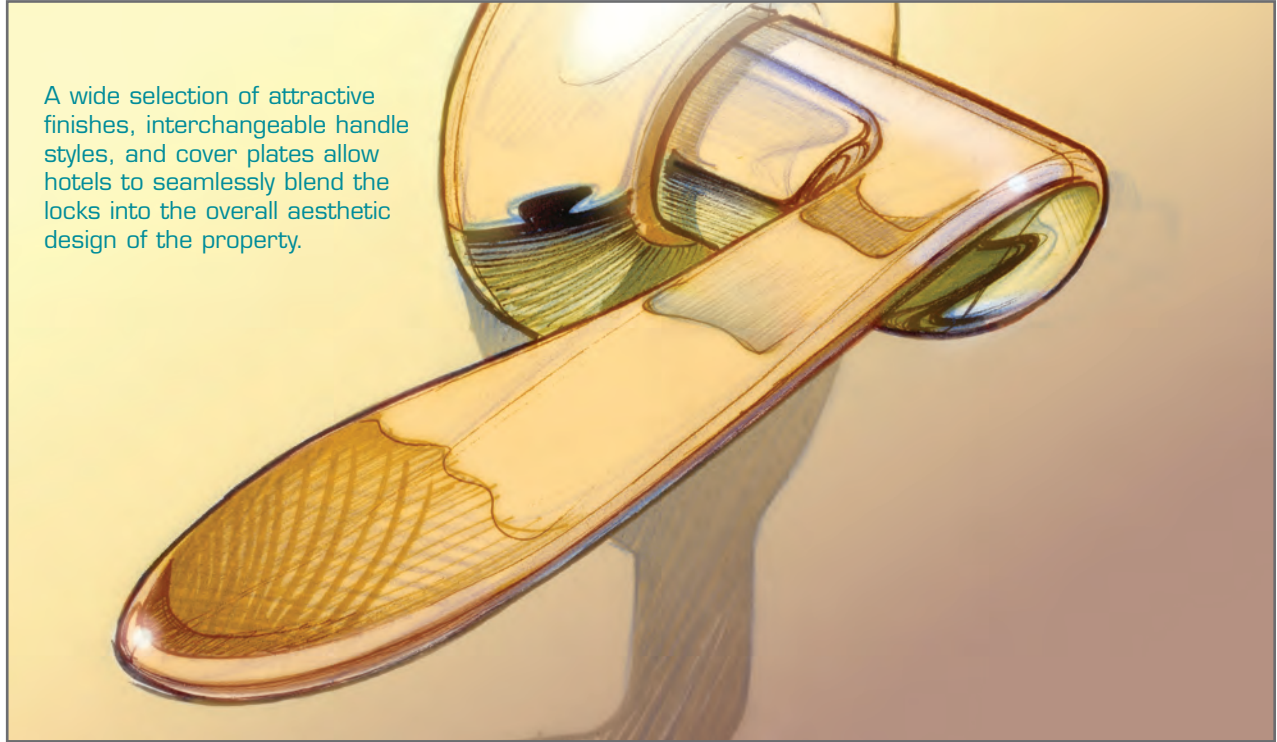
Onity developed, tested and patented the Groove and Arrow concept, which drastically improved correct keycard insertion by 222%.

Patent number US D484,883 S.

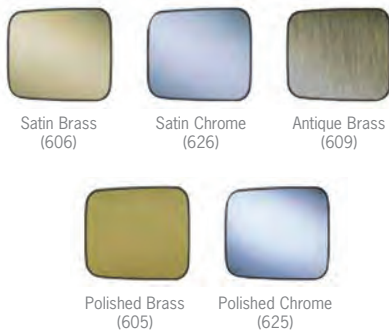


Configurations

A wide selection of attractive finishes, interchangeable handle styles, and cover plates allow hotels to seamlessly blend the locks into the overall aesthetic design of the property.



Finishes: Complement the elegance of your HT ADVANCE lock with any of these wear-resistant finishes.



Handles: Choose the perfect handle to reflect the design style of your property.



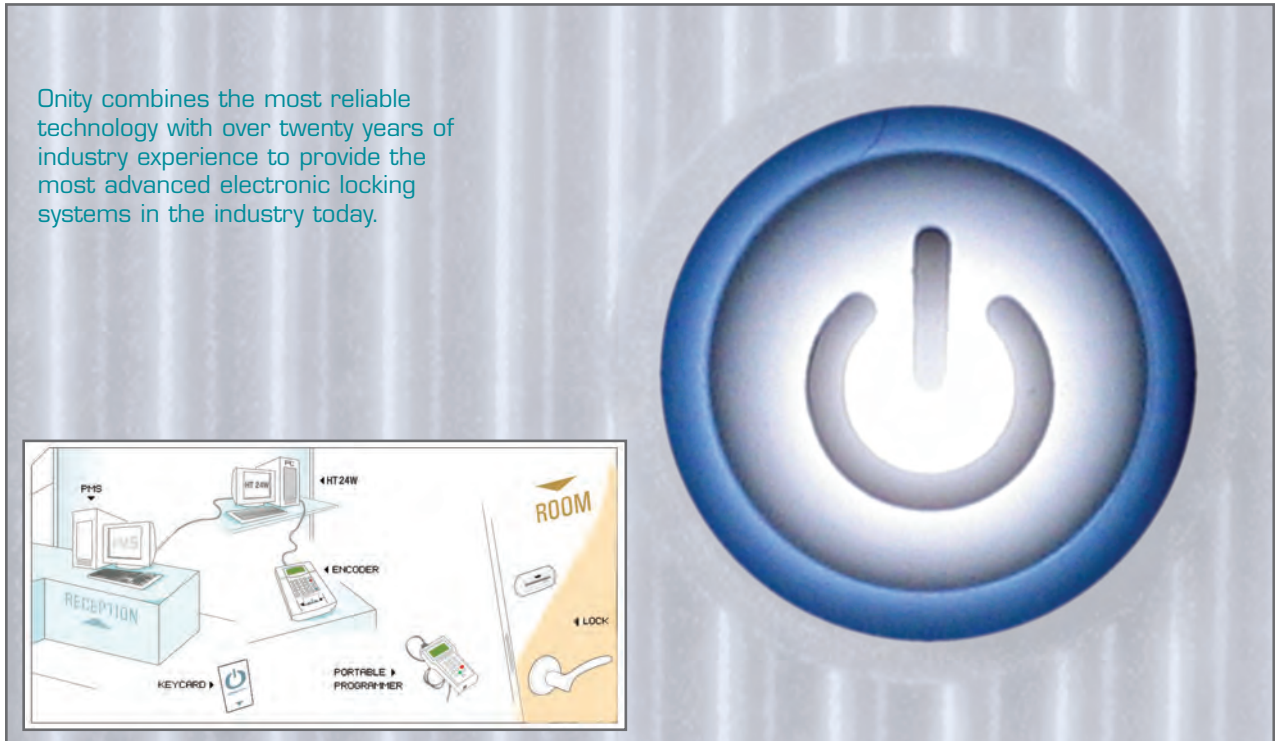
Cover Plates: Onity offers a selection of attractive cover plates that are ideal for retrofit projects.

Customized cover plate designs can also be developed upon request.



Front Desk Systems

Onity combines the most reliable technology with over twenty years of industry experience to provide the most advanced electronic locking systems in the industry today.



Operation Systems: ADVANCE can be powered with any of the following.

HT22i

For Mag-stripe keycards.

- Ideal for small and mid-sized properties.
- All the features and functions you expect from an electronic locking system without the need for a PC.
- PMS interface option.

HT24w

For Mag-stripe keycards. Expect more!

- Fully featured PC-based system for any property size.
- Virtually unlimited number of frontdesk card issuing stations.
- Optional PMS and POS interfaces.

HT28 Smart & Revalidator

Dual Technology Locks accept both Mag-stripe and Smart. All the benefits of HT24w plus virtually "on-line" performance.

- Enhances overall security and improves staff and operations management.
- Smart keycards can be used for staff only while guests use inexpensive mag-stripe.
- Smart keycards enable multiapplication.

Latch Mechanisms: Onity offers a wide range of latch mechanisms to suit the needs of any property.



ANSI

- UL approved
- Tested 1,000,000 cycles
- Smooth three-piece latch
- Anti-thrust latch
- Extra long security bolt
- Handed: left or right
- 25.4 or 32mm wide faceplate
- Automatic Deadbolt (optional)
- 70mm backset
- Panic function



ANSI with Auto Deadbolt

- UL approved
- Tested 1,000,000 cycles
- Smooth three-piece latch
- Anti-thrust latch
- Extra long security bolt
- Handed: left or right
- 25.4 or 32mm wide faceplate
- Automatic Deadbolt
- 70mm backset
- Panic function



EURO with Auto Latch

- Meets European standards prEN12209 (Grade 2) and UNE 97-320-88 (grade B. Maximum)
- Finish tests: abrasion, corrosion, moisture, scratch, UVA
- Autolatch (latch extra-projected until 16.5 mm and blocked)
- Anti thrust latch
- 20 or 23mm wide, round or square faceplate
- 50, 60 or 70mm backset
- High security bolt
- Non handed
- Panic function



DIN with Auto Deadbolt

- Made to DIN 18250 Class 3 Fire Approved
- Finish tests: abrasion, moisture, scratch, UVA
- Autodeadbolt
- Turn button secures electronic privacy
- Round corner faceplate and round or square strike
- 65 or 80mm backset
- 20 or 24mm wide faceplate
- Panic function



A UTC Fire & Security Company

Worldwide Headquarters

Atlanta GA , USA
Ph. +1 770 935 4228
+1 800 424 1433
moreinfo@onity.com

Asia / Pacific

Ph. +612 9316 0900
ASPAC@onity.com

Europe / Middle East / Africa

Ph. +34 943 448 300
EMEA@onity.com

Latin America

Ph. +52 55 5250 1557
Ph. +55 11 3670 2555
mexico@onity.com
LAM@onity.com

North America

Ph. +1 770 935 4228
+1 800 424 1433
moreinfo@onity.com
www.onity.com
1-866-86-Onity