



e-Cylinder by Onity

Contactless RFID electronic cylinder

The Onity RFID electronic cylinder is the perfect option for guestroom and staff doors at hotels. It brings a high security level using MiFare® anti-forgery key reading.

It is the ideal solution for refurbishment projects as it **only requires changing the mechanical cylinder for the electronic one**, with no need to modify the door structure. Therefore, its installation is extremely quick and easy.

Advantages

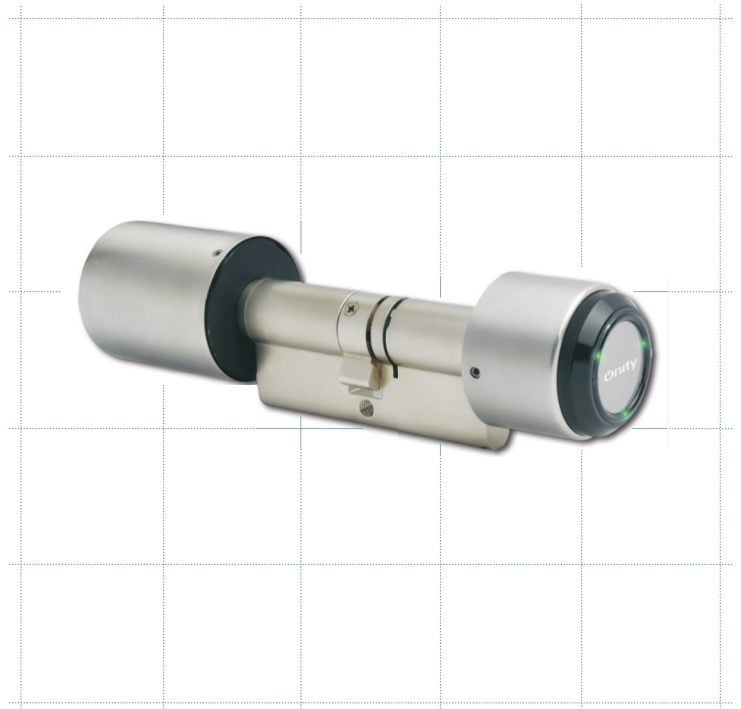
- Easy installation, as simple as replacing the mechanical cylinder by the RFID electronic one
- No need to change existing doors
- Easy to use
- Off-line installation (no wiring required)
- Audit trail for events download
- Compatible with Onity Intellity RFID energy saver

Features

- Easy installation, retrofit to EURO EN1303 mortise
- Works with MiFare® contactless cards and tags
- Smart sleep mode for energy saving
- Non volatile memory which records an audit trail of the last 1,000 events
- Cylinder size: 60 to 120 mm, symmetrical or asymmetrical (body size, without reader head or knob). Sizes in multiples of 5 (min. 30/30).
- Minimum backset: 25mm
- Reading distance: up to 30 mm
- Finishes: Satin Chrome or Satin brass
- Special version available for outdoors (IP54)
- Wide range of standard and certified handles



- Battery spec: 3 x 3-LR1, 910A, 1.5V (included)
- External battery pack for emergency power supply
- Battery life: 2 years approx. (30.000 operations)
- Acoustic low battery warning



Certifications

- R&TTE: EMC Directive
- LVD Directive

Other cylinder options

RFID electronic half cylinder

- Application: one way exit doors, warehouses etc.
- Cylinder size: 40 mm (30/10) to 70 mm (60/10)
- The same specification as standard RFID cylinder



RFID electronic double cylinder

- Application area: Passage doors, Public doors.
- Cylinder size: 60 to 120 mm (symmetrical or asymmetrical).
- The same specification as standard RFID cylinder

